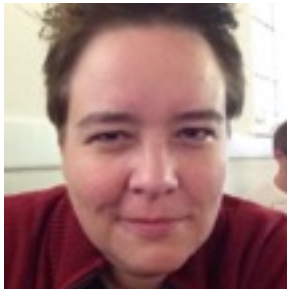




ML M483INT: Introduction to Pastoral Ministry

Instructor Information



Instructor: Julie Taylor

Office Location: St. Louis

Telephone: 646-552-5980

Email: jtaylor@uuma.org

Office Hours: Available by scheduling with instructor.

Course Information

Attendance at all classes is required.

Prerequisites: None

Class Days/Times: Intensives dates. Any expected online live calls or sessions.

Dates	Times	Purpose	Location
March 26-30, 2018	8:30am-5:00p,	Intensives session	ML Chicago Campus

Course Description: This course is an introduction to the ways in which clergy provide pastoral care both in and outside of congregations. We will engage the academic and the practical aspects of pastoral care. The primary goal of this course is to provide basic skills and education to enable students to engage in appropriate, safe and functional pastoral care in a variety of ministry settings, as well as preparing for CPE.

Course Management System: All MLTS courses use Populi as their online platform. You will be automatically placed into the Populi sites for your courses when you register. For technical support related to Populi, contact Valencia Penn-Hargrove at vpennhargrove@meadville.edu

Course Objectives:

The learning goals for this course include:

- basic competency in active & reflective listening skills & assessment
- enhance understanding of systems theory, power dynamics and conflict management styles
- enhance understanding regarding various and differing pastoral care needs for individuals and communities
- deepen commitment to personal balance and health (professional, physical, spiritual, emotional, interpersonal)
- further participants' skills in pastoral care using role play exercises.

Required Texts:

- Ashley, Willard W.C. *Learning to Lead: Lessons in Leadership for People of Faith*.
- Boyd-Franklin, Nancy. *Black Families in Therapy: Understanding the African American Experience*. (Second edition)
- Doehring, Carrie. *The Practice of Pastoral Care: A Postmodern Approach*. 2015 Revised edition) MAKE SURE TO USE THE CORRECT EDITION
- Gunning Francis, Leah. *Ferguson and Faith: Sparking Leadership and Awakening*.
- Law, Eric H.F. *The Wolf Shall Dwell with the Lamb: A Spirituality for Leadership in a Multicultural Community*.

- Leas, Speed B. Discover Your Conflict Management Style.
- Unitarian Universalist Association. Engaging Our Theological Diversity: A Report by the Commission on Appraisal, Unitarian Universalist Association. (Available as a free .pdf download from UUA website or through some online booksellers)
- Additional readings (articles, websites) posted to Populi as course progresses.

Assignments:

Full descriptions of assignments will be available on Populi. All assignments will be submitted through Populi unless prior arrangements made with instructor. Your final grade will be based on:

- Class participation—20%
- Daily Reading Posts—20%
- Assignments—60%

Assignment	Due Date	Brief Description	Point Value
Power Mapping	February 28, 2018	Complete Power Mapping exercise from SafetyPinBox.com	5% of final grade
Personal Snapshot Reflection	March 10, 2018	6-8 page paper details on Populi	10% of final grade
Daily reading reflections	All 5 due March 23, 2018	Post reflections on the daily readings.	20% of final grade
Conflict Inventory	March 26, 2018	Complete & post short reflection on your conflict management style	5% of final grade
Self-Care Plan	March 30, 2018	Complete a basic self-care plan after the final lecture	5% of final grade
Final Paper	April 21, 2018	6-8 page paper details on Populi	35% of final grade

Readings Schedule:

All books and readings must be completed prior to the start of the class. The following chart breaks down when we will focus on each reading. In addition to required text books assorted articles are also assigned. These articles will be posted to Populi Please check the Populi site for the most current readings, assignments, and deadlines.

Session & Date	Course Content/ Theme	Readings	Assignments
Pre Class Feb 28	Power Mapping	none	Complete the Power Mapping exercise from SafetyPinBox (link in Populi)
Pre Class March 10	Personal Snapshot Reflection	none	Complete a 6-8 page written Personal Snapshot Reflection (details on Populi)
Pre Class March 23	Reading completed prior to class starting	All texts and articles	Post a reflection on the daily readings-5 days worth total
Day 1 March 26, Monday	Overview of class. Explore definitions, cultural implications of pastoral care, our personal narrative and expectations of pastoral ministry. Active listening exercise.	<i>Brown</i> , introduction & ch. 1 (on Populi) <i>Cooper-White</i> , pgs. 71-94 (on Populi) <i>Doehring</i> , pgs. xiii-36-85-115	Complete & post short reflection on your conflict management style. Due March 26 by 11pm
Day 2 March 27, Tuesday	Systems theory, power dynamics, conflict management styles.	<i>Doehring</i> , pgs. 37-52 <i>Boyd-Franklin</i> , pgs. 1-173 <i>Law</i> , entire book <i>Leas</i> , entire book	nothing due

Session & Date	Course Content/ Theme	Readings	Assignments
Day 3 March 28, Wednesday	Difference between pastoral care and pastoral counseling. Introduction of a practical technique for crisis intervention. Participants will role play various scenarios.	<i>Doehring</i> , pgs. 53-71, 73-83 <i>Taylor</i> , (posted on Populi)	nothing due
Day 4 March 29, Thursday	Referrals & professional ethics. Differences in pastoral ministry when working with strangers and those known to the minister.	<i>Gunning-Francis</i> , entire book <i>Ashley</i> , pgs. 139-148, 193-227, 249-332	nothing due
Day 5 March 30, Friday	Challenges of ministry, including requirements for self-care.	<i>Doehring</i> , pgs. 117-153 <i>Nouwen</i> , pgs. 81-96 (on Populi) <i>Ashley</i> , pgs. 41-57 <i>UUA</i> , entire document	Self-Care Plan. Due March 30, 11pm
Post class April 21	Final paper	none	Final paper due 6-8 pages. Details on Populi.

Policies

Late/Incomplete Policy

Regular, substantive, and prompt participation and activity online (on Zoom calls and discussions) is required for successful completion of the course. It is the student's responsibility to communicate with the

instructor if you have an emergency that requires you to miss a deadline. Late work will be penalized one full letter grade per week late. Assignments received more than two weeks past the original due date (unless cleared with the instructor in advance and an alternate deadline negotiated) will be given a grade of 0/F. Incompletes will not be given except in the case of true, unanticipated emergency, at the instructors discretion.

Statement Regarding Accommodation

Meadville Lombard is committed to making reasonable accommodations to assist individuals with disabilities in reaching their academic potential. If a student has a disability that qualifies under the Americans with Disabilities Act (ADA) and requires accommodations, they should contact the Vice President for Enrollment Management and Student Affairs, Ken McHugh (kmchugh@meadville.edu) (312) 735 2919. Please note that classroom accommodations cannot be provided without an approved Accommodations Form.

Student Handbook

Your MLTS Student Handbook is the primary source for information and policies regarding your successful completion of coursework. Please consult the Student Handbook version that governs your entering year at Meadville. [View the 2017 Student Handbook \(link opens in new window\)](#).

Add/Drop Policy and Dates

Students must contact the Director of Student Records in order to add or drop a course after the registration period has ended. The student will complete an Drop/Add Form (available in the Student Handbook) and submit this to the faculty and Registrar within 10 business days from the start of the term.

Academic Integrity Statement

Students are expected to be familiar with MLTS Academic Integrity Policy. Your own commitment to learning, as evidenced by your enrollment at MLTS, and the school's covenant requires you to be honest in all your

academic course work. Faculty members are required to report all infractions to the VP of Faculty and Student Affairs. The policy on academic integrity and other resources related to student conduct can be found on the [MLTS](#) Student Handbook.